



CHALLENGE LIFE
Live to Your Fullest Expectation

ONE-STEP-EXPLORATION or
(CLOSE)

CATEGORY: MEDICAL

Career Field: 2-Year Nursing Degree
Associate's Degree in Nursing (ADN)

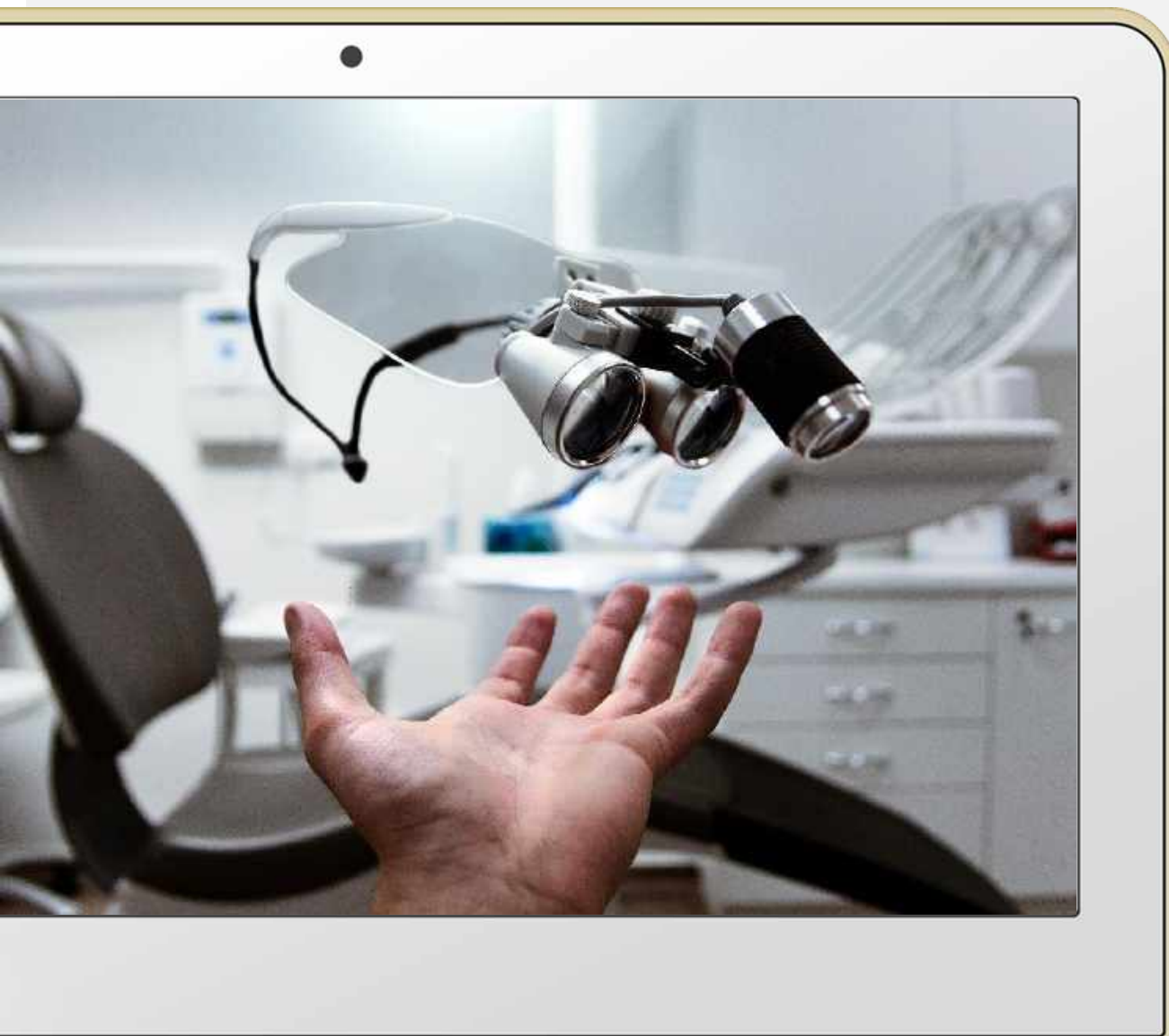
Learn our detailed step-by-step "10 P" Method to exploring which fields of Medical have the best potential to fulfill you emotionally, socially and financially!

- The Medical world is exciting, exploding with new technology and new job opportunities. Medical is a diverse multi-faceted career field with tons of opportunities to explore. However, some career fields can be VERY expensive to obtain and the **P**RE-REQUISITE and **P**ROGRAMS can be extensive; but the **P**AYBACK may be worth it. So let's discover this new world together.
- There are several degree paths available to become a Nurse. Today we will discuss the 2-Year Nursing Degree (ADN) track.
- Let's get into our "**10 P**s." We will save the **P**AY and the **P**AYBACK for last so we can discuss our **CLiFS#**.



CATEGORY: MEDICAL

CAREER FIELD: 2-Year Nursing Degree Associate's Degree in Nursing (ADN)



POSITION

Nursing, is an integral part of the healthcare system, encompasses the promotion of health, prevention of illness and care of physically ill, mentally ill and disabled people of all ages in healthcare facilities and other community settings. Within this broad spectrum of healthcare, the phenomena of particular concern to nurses are individual, family and group "responses to actual or potential health problems" (ANA, 1980, P.9).

One of the main differences between a 2-Year ADN and a 4-Year BSN, is BSN can go on to apply for management positions. Also, BSN's can go on to higher education and become Nurse Practitioners

POSITION

The typical day for a nurse can be long, crazy, exhausting, exhilarating and fulfilling.

- Visit the link below for a typical “day-in-the-life-of” a Floor Nurse.
- Nurses work a variety of shifts from 8,12 to 24 hour shifts. Most jobs require walking, standing and lifting.
- Some Nurses are completely administrative or educational.
- There are numerous tasks a Nurse must learn, in order to become competent, such as: starting IV’s, drawing blood, and taking care of patients at their sickest, weakest point.



<http://www.registerednursern.com/a-day-in-the-life-of-a-nurse-what-is-it-like-to-work-as-a-registered-nurse/>

- Ambulatory Care Nurse
- Burn Care Nurse
- Camp Nurse
- Cardiac Care Nurse
- Cardiac Catheterization Laboratory Nurse
- Nurse Case Manager
- Charge Nurse
- Correctional Nurse
- Cardiovascular Operating Room (CVOR) Nurse
- Dermatology Nurse
- Developmental Disability Nurse
- Domestic Violence Nurse
- Emergency Room Nurse
- Enterostomy Nurse
- Fertility Nurse
- Flight Nurse
- Forensic Nurse
- Gastroenterology Nurse
- Genetic Nurse
- Geriatric Nurse
- Holistic Nurse
- Home Health Nurse
- Hospice Nurse
- ICU Nurse
- Infection Control Nurse
- Infusion Nurse
- Labor and Delivery Nurse
- Legal Nurse Consultant
- Long-Term Care Nurse
- Managed Care Nurse
- Medical-Surgical Nurse
- Military Nurse
- Missionary Nurse
- Nephrology Nurse
- Neuroscience Nurse

POSSIBILITIES

- Once you're in the career, where else can you go?
- How far can you grow vertically?
- Will this career provide a bridge to another career path?
- Will there be opportunities to volunteer your services (*perhaps even internationally*)?

- NICU Nurse
- Nurse Administrator
- Nurse Advocate
- Nurse Attorney
- Nurse Care Coordinator
- Nurse Entrepreneur
- Nurse Executive
- Nurse Manager
- Obstetrics (OB) Nurse
- Occupational Health Nurse
- Oncology Nurse
- Operating Room Nurse
- Ophthalmic Nurse
- Organ Procurement Coordinator
- Orthopaedic Nurse
- Otorhinolaryngology (ENT) Nurse
- Pain Management Nurse
- Palliative Care Nurse
- Parish Nurse
- Pediatric Endocrinology Nurse
- Perianesthesia Nurse
- Perinatal Nurse
- Plastic Surgery Nurse
- Postpartum Nurse
- Psychiatric Nurse
- Public Health Nurse
- Radiology Nurse
- Rehabilitation Nurse
- Research Nurse
- Respiratory Nurse
- Rheumatology Nurse
- School Nurse
- Substance Abuse Nurse
- Telemetry Nurse
- Telephone Triage Nurse
- Transcultural Nurse
- Transplant Nurse
- Trauma Nurse
- Travel Nurse
- Wound Care Nurse

POSSIBILITIES

(continued)

- What else can you do, with what you learn in this field?
- Are there several specialties, so you can move around?
- What are the chances that you could open your own practice or non-profit agency?

A photograph of a male nurse in blue scrubs walking down a hospital hallway. He is wearing a white ID badge around his neck. The hallway has white doors and walls, and a window is visible in the background.

PRE-REQUISITES

- ✓ Do you need special training or a certificate?
- ✓ Do you need to go to college?
- ✓ Will you need a Masters or Doctorate Degree?
- ✓ How long will it take to complete all the training?

YOU MUST HAVE A HIGH SCHOOL DIPLOMA OR G.E.D. TO PURSUE A NURSING DEGREE

PRE-REQUISITES

- **First Year English Composition Sequence**
- **One year General Chemistry (2 semesters - 2 lectures and a minimum of 1 lab)**
- **One year Human Anatomy & Physiology (2 semesters including lectures and laboratories)**
- **One semester Introductory Biology (lecture only)**
- **One semester Microbiology (lecture only)**
- **One semester Statistics**
- **One semester Lifespan Development**
- **One semester Nutrition**

Every Nursing school has different requirements. Most Medical schools will want the pre-requisite courses completed prior to entering their Nursing Program. It's an EXCELLENT IDEA to take as many of these courses as AP classes in High School. You'll get these credits done before you leave High School. (Caution: Make sure you take "college level" AP and not just Honors level classes)!

Additional Requirements

National Council Licensure Examination (NCLEX)

In College



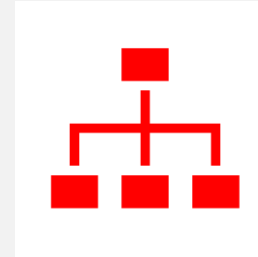
Many schools require that you take a practice NCLEX.

After You Graduate



All Nurses **MUST PASS** the NCLEX before they can practice

After you Pass the NCLEX



Generally speaking, you must apply for a license for every state where you want to practice

The NCLEX, is a national standardized exam that the board of nursing uses to determine whether a candidate is prepared for entry-level nursing practice.

PROGRAM

Try to reduce the overall costs of education by **ANY MEANS NECESSARY**

Go to a **COMMUNITY COLLEGE**

Stay In State

Stay At Home

Become a T.A. (Teacher Assistant)

Work On Campus

GET \$SCHOLAR\$HIP DOLLAR\$

Apply for internships that lead to \$scholar\$hips

Apply for grant dollars

Work after school and during summers to offset costs

Save Money

 Birthday, Christmas, Graduation, Allowance Money

All of these will all help lower your **CLiFS#**

PERSONALITY IMPORTANT CHARACTERISTICS





POSITIVES

Like other things in life, jobs have both negative and *positive* aspects to them. You'll want to investigate both aspects. Determine if you can *endure the negative* and *enjoy the positive*. For your experience to be balanced, you want to take both into account. Very likely, you'll find that the *positives* far outweigh the negatives. Either way, you will have done your homework and made an informed decision. You'll be glad you did.

Consider the following:

Help saves lives

Flexible schedule

Great benefits

Ability to travel

Good pay

Trusted profession

Secure future

Respected career

Working 12 hours shifts

Uniforms (low maintenance)

Many different specialties

Great knowledge base



PROBLEMS

Even when we enjoy our jobs, there can still be things about the job that are challenging. We believe that you won't let a little challenge take you down. But we encourage you to look squarely at the challenges, identify them and design a strategy to deal with them. Or determine if a different career might not be better fitted to your temperament.

Consider the following:

Watching patients suffer

Stresses of the job

Dealing with bodily fluids

Being underappreciated

Tons of critical thinking

Getting attached to patients

12 hour shifts

Busy Shifts

Hard time for new graduates to find jobs

Busy shifts

Work/Life balance difficult to maintain

You can forget yourself

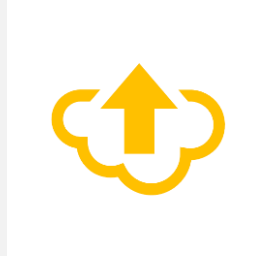
Pressures on legs and back (You'll Need Compression stockings)

Projected Growth



Grow 15% from
2016- 2026

Fast/Slow Growth



Much Faster
than Average

Growth/Decline Reason



- Increased Chronic Conditions
- Preventive Care
- Baby-Boomers Living Longer

Similar Jobs



- Dental Hygienists
- Diagnostic Sonographers
- Physician Assistants
- Respiratory Therapy

PROJECTIONS

Does your chosen career path have longevity?

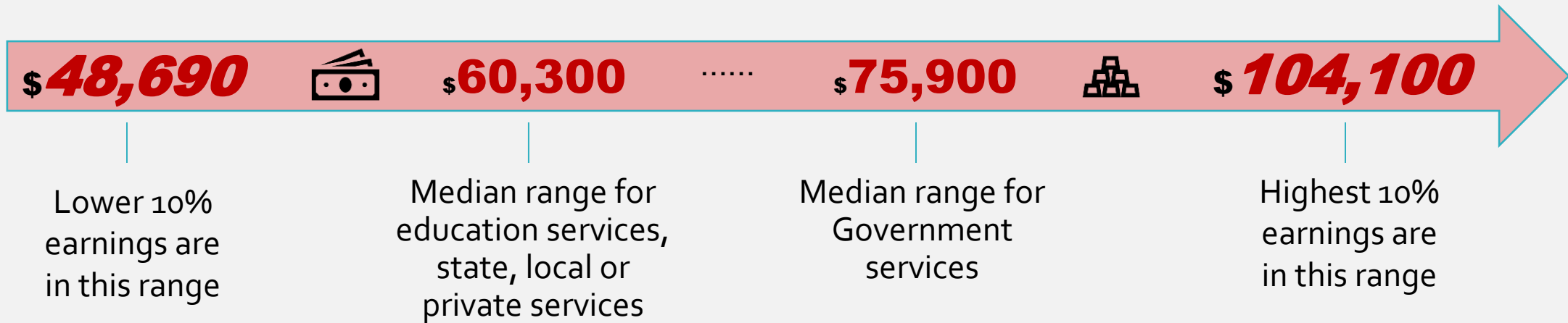
Is it a new profession with an unknown future?

Will competition, technology, regulatory changes or innovation impact the future of your chosen profession?

PAY

The Median Salary for a 2-Years Registered Nurse is **\$70,000** (\$33.65/hr)

The Average Yearly Salary is between...



PAYBACK

These costs reflect the average for 4-years of education (tuition ONLY). There are other costs: Books, Supplies, Room and Board etc.

Note: You still have to go to Advanced Training after your BSN to become an APN

\$24,000-\$100,00+

University

A 4-year college to get a 2-year degree can be **ridiculously expensive**

| | |
|--------------|----------|
| In-State | \$9,694 |
| Out-of-State | \$17,214 |
| Private | \$30,890 |

Community College

Smaller class size, smaller campuses, **more economical**

| | |
|--------------|----------|
| In-State | \$7,270 |
| Out-of-State | \$12,910 |
| Private | \$23,167 |

Advanced H.S. Classes & Community College

Example: In high school take AP Chemistry, Statistics, Nutrition, Lifespan and English.

First semester college – DONE!

CLiFS#

Let's compare the cost of your education to your potential annual salary (*after graduation*).

The analysis below shows your debt percentage of your annual salary, which may be considerably less than 96% of your salary if you chose an expensive 4-year university.

Average Cost Degree

- So, you chose to go to a private community college.
- Your tuition ALONE was **\$30,890**.
- Additional costs: Room and Board, Books, Supplies etc. (*not added here*)

Average Annual Salary (After graduation)

- Average Salary between \$48,690 - \$104,100
- The Median Salary is **\$70,000**.

CLiFS#

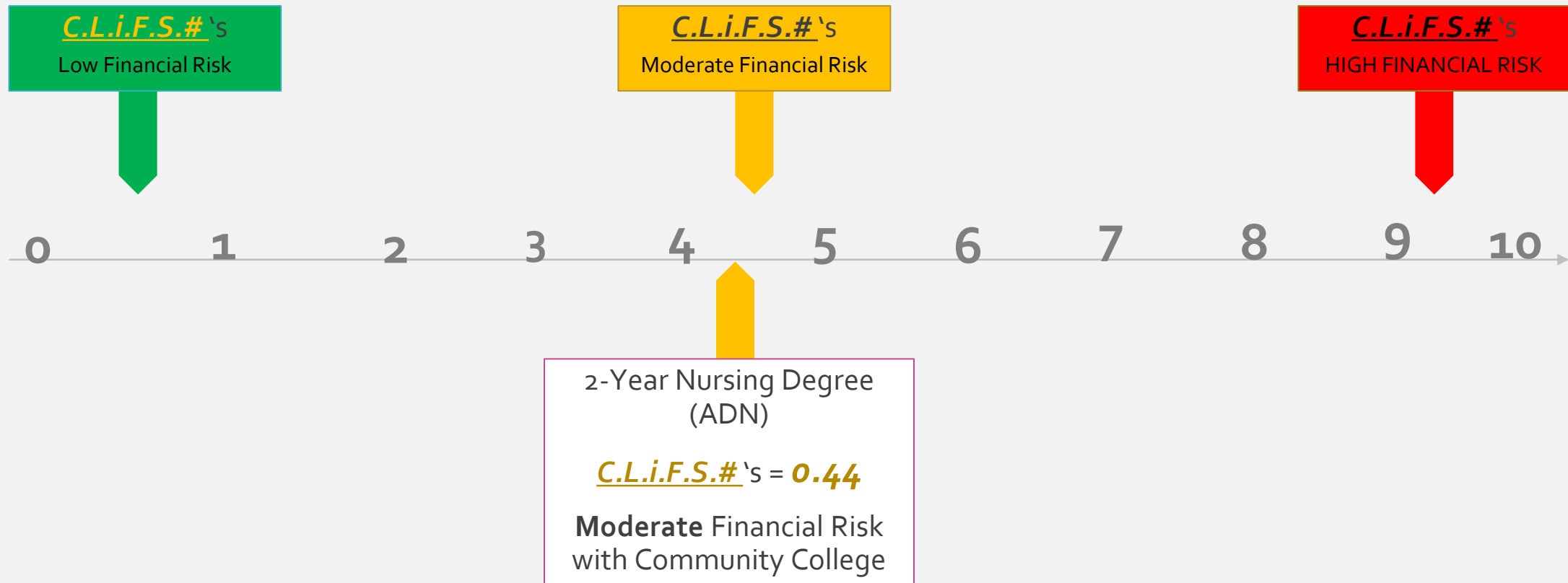
Average Cost \$30,890

Avg. Median Salary
\$70,000

This yields a **CLiFS#**
score of **0.44**

CLiFS# CHALLENGE LYFE Financial and Scholastic Risks Numbers

Compared to other Professions





CHALLENGE LIFE
Live to Your Fullest Expectation

ONE-STEP-EXPLORATION or

(CLOSE)

CATEGORY: MEDICAL

Career Field: 2-Year Nursing Degree
Associate's Degree in Nursing (ADN)

Thank you for taking the time to learn our detailed
step-by-step "10 P" Method to exploring which
fields of Medical have the best potential to fulfill you
emotionally, socially and financially!